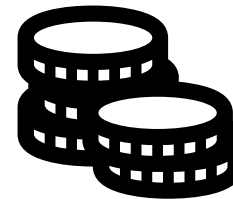


## Guidance for using this document

For some of the stages in the process, left click on the image next to the text for links to more information (some links require an internet connection)

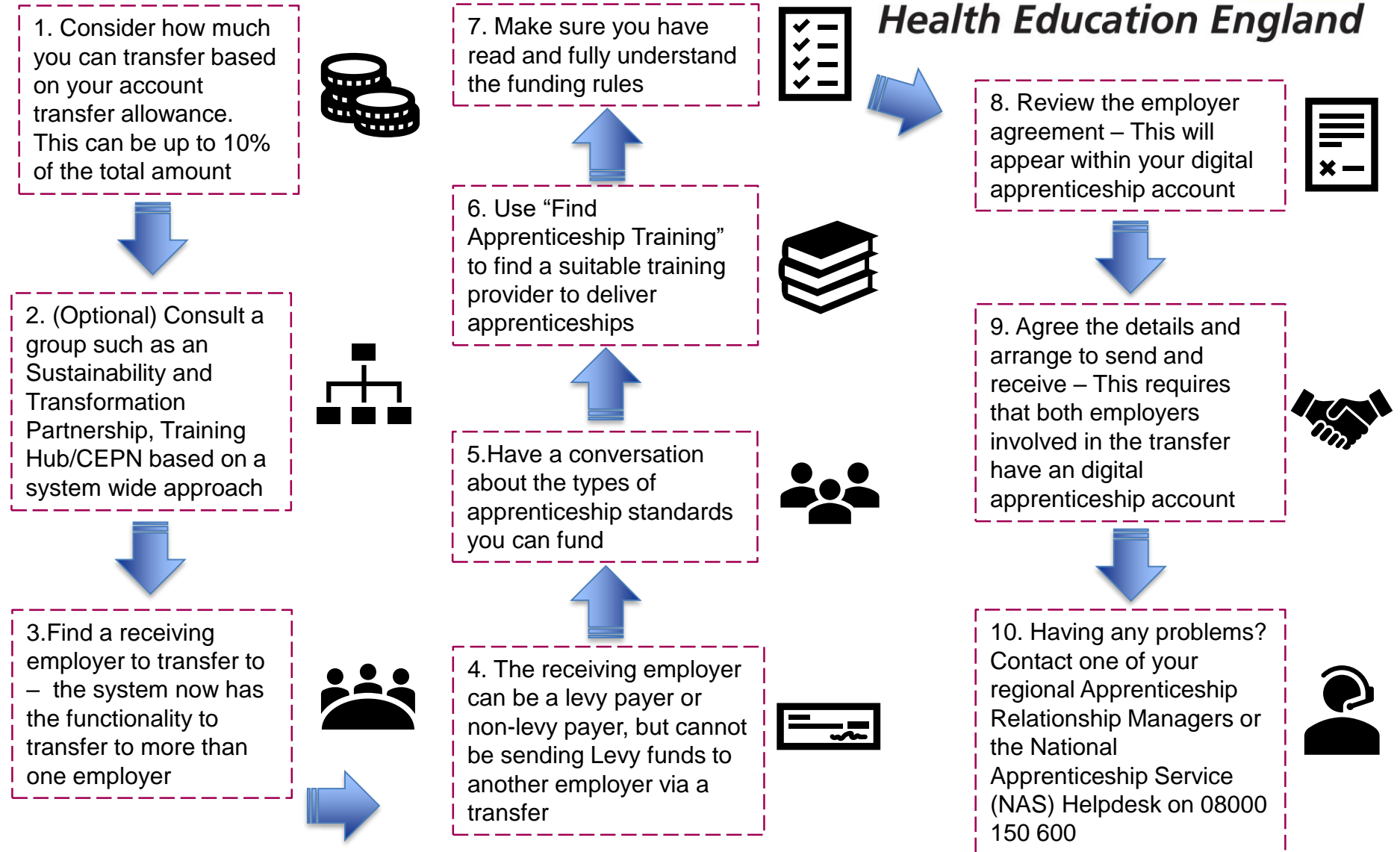
1. Consider how much funding you wish to transfer. This can be up to 10% of your total Levy amount



# NHS 10% Levy Transfer Journey



**Health Education England**



# NHS 10% Levy Transfer Journey



*Health Education England*

## **Apprenticeship Relationship Manager contact information**

**North – Fay Lane:** [fay.lane@hee.nhs.uk](mailto:fay.lane@hee.nhs.uk)

**Midlands & east – Joe Ryan:** [joe.ryan@hee.nhs.uk](mailto:joe.ryan@hee.nhs.uk)

**South / South West – Sarah-Jane Marcello:** [sarah-jane.Marcello@hee.nhs.uk](mailto:sarah-jane.Marcello@hee.nhs.uk)

**London and South East – Jennifer Stone:** [Jennifer.stone@hee.nhs.uk](mailto:Jennifer.stone@hee.nhs.uk)