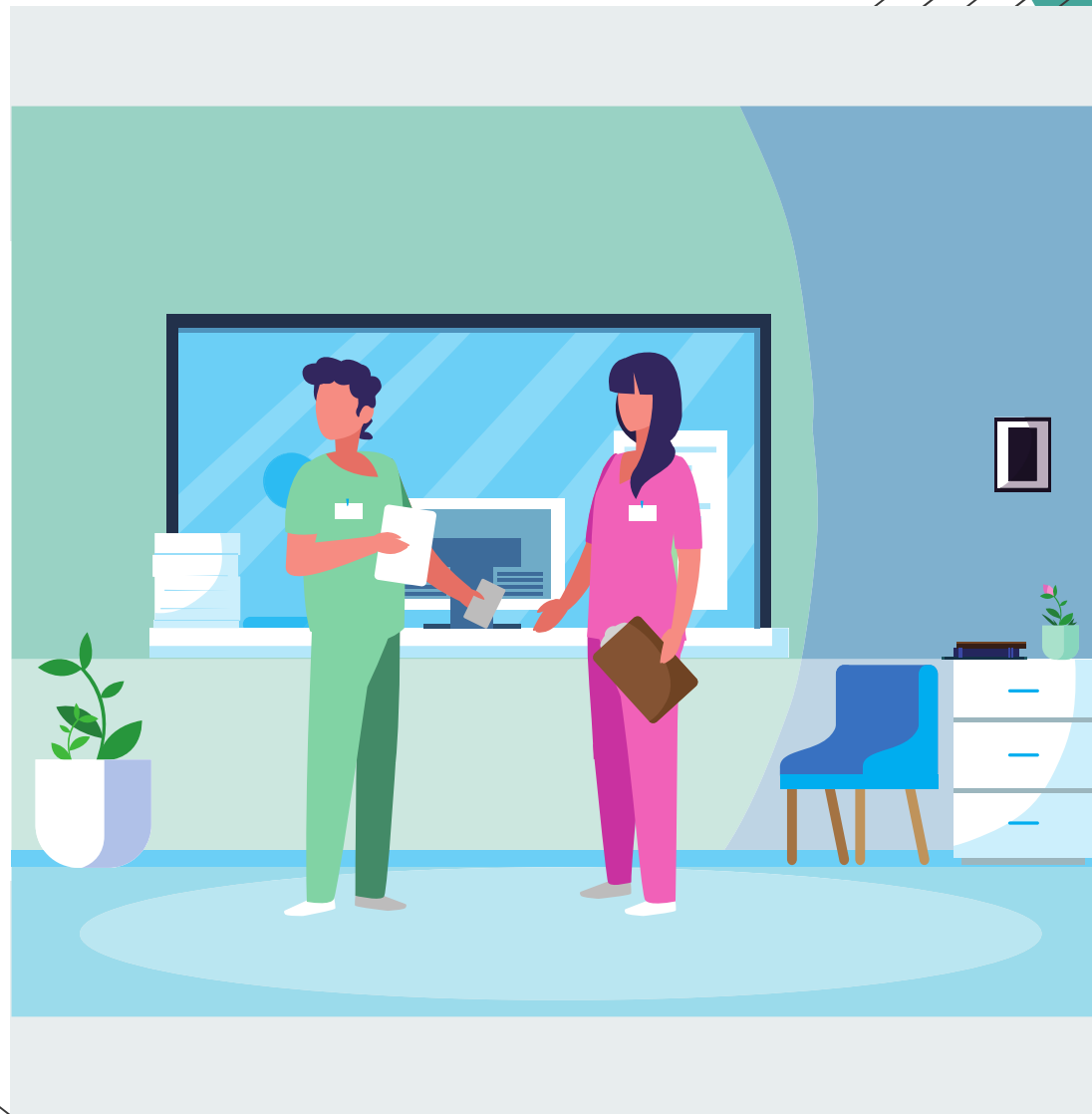


SENIOR HEALTHCARE SUPPORT WORKER APPRENTICESHIP



INFORMATION
PACK

APPRENTICESHIP OVERVIEW



Senior Healthcare Support Workers (SHCSWs) help registered practitioners deliver healthcare services to people. SHCSWs carry out a range of clinical and non-clinical healthcare or therapeutic tasks, under the direct or indirect supervision of the registered healthcare practitioner.

They provide high quality, compassionate healthcare, following standards, policies or protocols and always acting within the limits of their competence.

[STANDARD](#)



[EPA](#)

LEVEL
3

DURATION
18 MONTHS

REFERENCE
ST0217



ENTRY REQUIREMENTS AND QUALIFICATIONS

Entry requirements

The employer, in partnership with the training provider, will determine the selection criteria for apprentices. Employers may select apprentices with prior experience as a support worker.

Apprentices without level 2 English and maths will need to achieve this level prior to taking the end-point assessment

• • • •
• • • •

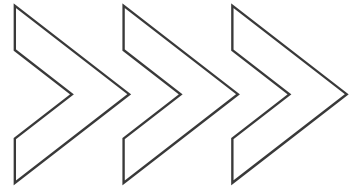
• • • • •
• • • • •
• • • • •

Qualifications

Apprentices must complete a Level 3 Diploma in Healthcare Support prior to taking the end-point assessment.

All apprentices must also pass the apprenticeship end-point assessment.

The apprentice must complete an induction which meets the 15 standards as set out in the Care Certificate.



Training Provider

All providers who want to deliver apprenticeship training must be on the Register of Apprenticeship Training Providers (RoATP). Employers must choose a provider from the Register.

Providers must meet a clear set of criteria in order to be included on the Register. These include financial health, capacity/capability and quality criteria. If a provider does not meet these criteria they will not be included on the Register.

[Click here](#) for a list of registered providers for the Senior Healthcare Support Worker apprenticeship.

Employers can also apply to the RoATP to become an employer provider, find out more [here](#).



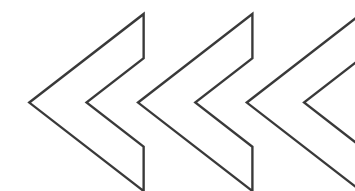
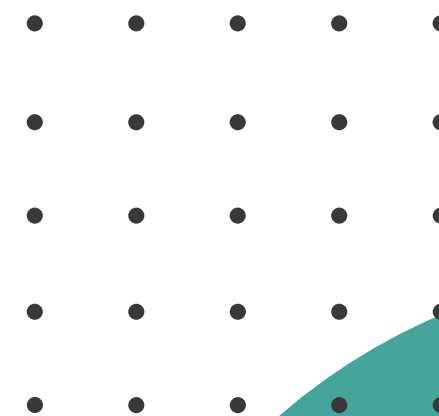
End point assessment

As part of their apprenticeship, apprentices will have to complete end point assessment.

The end-point assessment organisation will assess the apprentice in line with the Senior Healthcare Support Worker End-point Assessment Plan. This ensures that all apprentices are assessed holistically to a consistent standard at the end of their apprenticeship.

Organisations offering end-point assessment will need to be registered on the Register of End-Point Assessment Organisations (RoEPAO).

[!\[\]\(74d4806277d7e73349d8e8c0897931e9_img.jpg\) Click here](#) for a list of EPAOs registered for the Senior Healthcare Support Worker apprenticeship.



APPLYING AND PROGRESSION ROUTES

Candidates interested in applying for the Senior Healthcare Support Worker apprenticeship should visit [NHS Jobs](#), [Find an Apprenticeship website](#) and the [Register of Apprenticeship Training Providers](#). It may also be worth contacting training providers directly to make enquiries about the apprenticeships they offer.

SHCSW apprentices will be over 16 and may earn more than the minimum apprenticeship wage. Pay is determined locally so whilst it may be higher, it cannot be lower than this amount. [Click here](#) for more information on apprentice pay.

Once qualified Senior Healthcare Support Workers will typically earn between £20k - £24k.

With the appropriate qualifications/evidence of academic ability, SHCSWs could train to become an assistant practitioner, or one of the many registered healthcare professions such as nursing associate, registered nurse, physiotherapist, podiatrist, midwife or occupational therapist.



Case studies and resources



Alain Rajackhan - SHCSW apprentice

“My job dynamic can change very quickly, which makes this job very interesting.”



More case studies

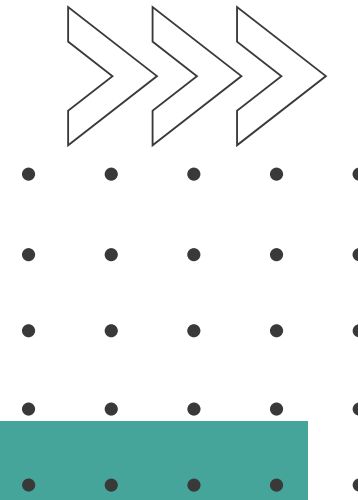
The HASO website has tools designed to help employers embed their apprenticeships, see resources below:

Toolkit - The toolkit is designed to support employers through the process, end to end, from setting out employers organisational strategy right through to when the apprentices are in the workplace.

Pathways tool - The pathways tool can be used to view different roles and how to move from one apprenticeship occupation to another.

Costing Calculator tool - The calculator tool can be used to work out the potential cost of delivering apprenticeships.

ABOUT HASO



Health Education England sponsors the [Healthcare Apprenticeship Standards Online \(HASO\)](#) website. The website is hosted by Skills for Health and provides the health sector in England with a wide range of apprenticeship resources to train staff in clinical and non-clinical roles.

Apprenticeship standards are developed by employer-led Trailblazer groups in line with policy outlined by the Institute for Apprenticeships and Technical Education. Health Education England sponsors Skills for Health to facilitate a range of these employer groups. This standard was developed by a trailblazer group sponsored by Health Education England and facilitated by Skills for Health.

Skills for Health is facilitating the development of several other apprenticeship standards for use in the health sector.

