

Healthcare

Apprenticeships

PSYCHOLOGICAL WELLBEING PRACTITIONER APPRENTICESHIP

INFORMATION PACK



APPRENTICESHIP OVERVIEW



Psychological Wellbeing Practitioners offer assessments for mild to severe common mental health problems, undertaking assessment of risk and making of safeguarding referrals.

Psychological Wellbeing Practitioners deliver the service from different venues for example GP surgeries, community healthcare settings and other community based venues, such as job centres.

STANDARD



EPA



LEVEL
6

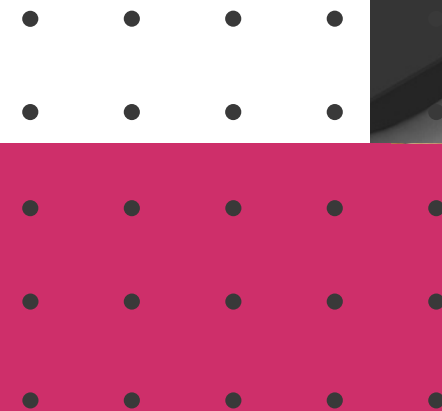
DURATION
12 MONTHS

REFERENCE
ST0568

ENTRY REQUIREMENTS AND QUALIFICATIONS

Entry requirements

The employer, in partnership with the university, will determine the selection criteria for apprentices which might typically include: a requirement for applicants to have a degree in a relevant subject, previous experience of working in mental health or experience of a setting where they are likely to be exposed to people at increased risk of experiencing mental health difficulties, either paid or voluntary work, having personal experience of mental health difficulties.




Qualifications

Apprentices will be required to complete a Certificate in Psychological Wellbeing Practice

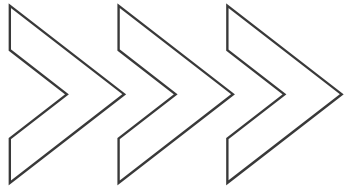
All apprentices must also pass the apprenticeship end-point assessment.

REGULATOR AND PROFESSIONAL BODIES



 The British Psychological Society (BPS) sets out the standards of proficiency for Psychological Wellbeing Practitioners. Psychological Wellbeing Practitioners must continue to meet the standards of proficiency that are relevant to their scope of practice - the areas of their profession in which they have the knowledge and skills to practise safely and effectively.

Psychological Wellbeing Practitioners may become a member of a professional body like the Association of Educational Psychologists (AEP), the British Psychological Society (BPS) or the Association of Clinical Psychologists (ACP-UK).



Training Provider

All providers who want to deliver apprenticeship training must be on the Register of Apprenticeship Training Providers (RoATP). Employers must choose a provider from the Register.

Providers must meet a clear set of criteria in order to be included on the Register. These include financial health, capacity/capability and quality criteria. If a provider does not meet these criteria they will not be included on the Register.

[Click here](#) for a list of registered providers for the Psychological Wellbeing Practitioners apprenticeship.

Employers can also apply to the RoATP to become an employer provider, find out more [here](#).



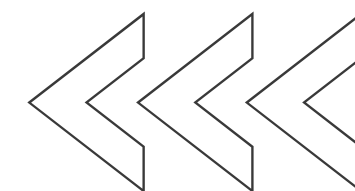
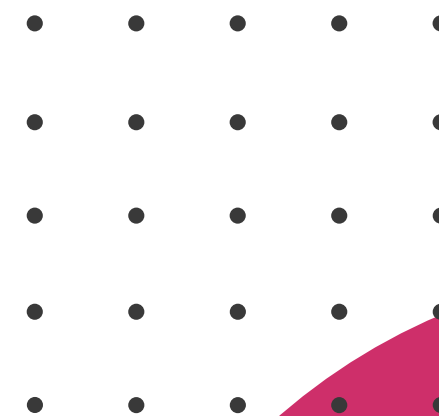
End point assessment

As part of their apprenticeship, apprentices will have to complete end-point assessment.

The end-point assessment organisation will assess the apprentice in line with the Psychological Wellbeing Practitioner End-point Assessment Plan. This ensures that all apprentices are assessed holistically to a consistent standard at the end of their apprenticeship.

Organisations offering end-point assessment will need to be registered on the Register of End-Point Assessment Organisations (RoEPAO).

[Click here](#) for a list of EPAOs registered for the Psychological Wellbeing Practitioner apprenticeship.



APPLYING AND PROGRESSION ROUTES

Candidates interested in applying for the Psychological Wellbeing Practitioner apprenticeship should visit [NHS Jobs](#), [Find an Apprenticeship website](#) and the [Register of Apprenticeship Training Providers](#). It may also be worth contacting training providers directly to make enquiries about the apprenticeships they offer.

Psychological Wellbeing Practitioner apprentices may earn more than the minimum apprenticeship wage. Pay is determined locally so whilst it may be higher, it cannot be lower than this amount. [Click here](#) for more information on apprentice pay.

Once qualified, Psychological Wellbeing Practitioners in the NHS will typically earn between £24k - £30k. With experience and further training, a Psychological Wellbeing Practitioner can specialise in a particular area of practice, for example, in long-term conditions (LTCs) or perinatal mental health services to support families.

There is also opportunity to train as high intensity therapists, clinical psychologists, counselling psychologists and counsellors.



Case studies and resources



Ann Carter - PWP Trailblazer
Chair

“The Psychological Wellbeing Practitioner role is specific to Improving Access to Psychological Therapies services.”



More case studies



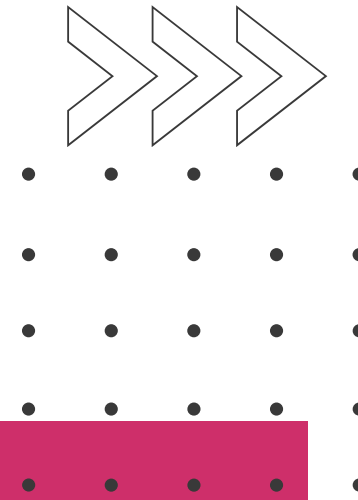
The HASO website has tools designed to help employers embed their apprenticeships, see resources below:

Toolkit - The toolkit is designed to support employers through the process, end to end, from setting out employers organisational strategy right through to when the apprentices are in the workplace.

Pathways tool - The pathways tool can be used to view different roles and how to move from one apprenticeship occupation to another.

Costing Calculator tool - The calculator tool can be used to work out the potential cost of delivering apprenticeships.

ABOUT HASO



Health Education England sponsors the [Healthcare Apprenticeship Standards Online \(HASO\)](#) website. The website is hosted by Skills for Health and provides the health sector in England with a wide range of apprenticeship resources to train staff in clinical and non-clinical roles.

Apprenticeship standards are developed by employer-led Trailblazer groups in line with policy outlined by the Institute for Apprenticeships and Technical Education. Health Education England sponsors Skills for Health to facilitate a range of these employer groups. This standard was developed by a trailblazer group sponsored by Health Education England and facilitated by Skills for Health.

Skills for Health is facilitating the development of several other apprenticeship standards for use in the health sector.

