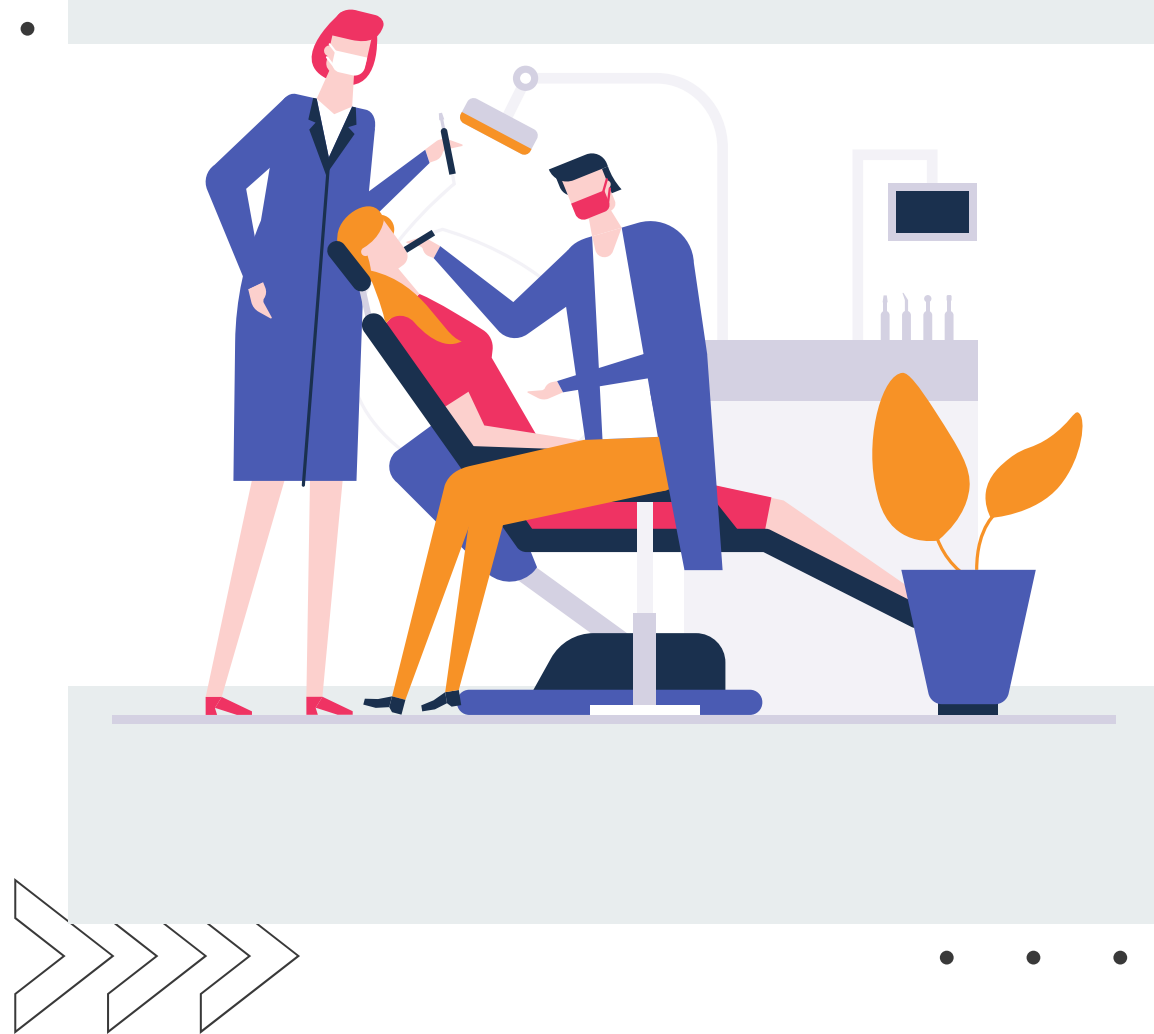


# DENTAL NURSE APPRENTICESHIP

INFORMATION  
PACK



# APPRENTICESHIP OVERVIEW



Dental Nurses provide chair side support to all dental professionals and ensure high standards of cleanliness and infection control.

Dental Nurses also prepare instruments, materials and medicaments for dental procedures, mix materials, sterilise instruments, keep records, note dictation, carry out stock control and ensure patient comfort and safety throughout their visit.

STANDARD



EPA

LEVEL  
3

DURATION  
18 MONTHS

REFERENCE  
ST0113



# ENTRY REQUIREMENTS AND QUALIFICATIONS

## Entry requirements

The employer, in partnership with the training provider, will determine the selection criteria for apprentices.

Apprentices without level 2 English and maths will need to achieve this level prior to taking the end-point assessment

## Qualifications

Apprentices must complete a level 3 qualification which has been approved by the General Dental Council as meeting the requirements for entry to the professional register as a Dental Nurse.

All apprentices must also pass the apprenticeship end-point assessment.

# REGULATOR AND PROFESSIONAL BODIES

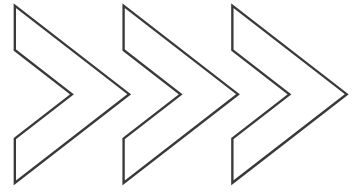


Dental Nurse is a profession regulated by the General Dental Council (GDC). The GDC sets out the standards of proficiency which every Dental Nurse must meet in order to become registered.

Once registered, Dental Nurses must continue to meet the standards of proficiency that are relevant to their scope of practice - the areas of their profession in which they have the knowledge and skills to practise safely and effectively.

On successful completion of an approved programme, apprentices are eligible to apply to the GDC for registration as a Dental Nurse, which is a requirement to practice under the protected title of Dental Nurse.

Dental Nurses may become a member of a professional body like the British Association of Dental Nurses (BADN) or the Society of British Dental Nurses (SBDN).



# Training Provider

All providers who want to deliver apprenticeship training must be on the Register of Apprenticeship Training Providers (RoATP). Employers must choose a provider from the Register.

Providers must meet a clear set of criteria in order to be included on the Register. These include financial health, capacity/capability and quality criteria. If a provider does not meet these criteria they will not be included on the Register.

[Click here](#) for a list of registered providers for the Dental Nurse apprenticeship.

Employers can also apply to the RoATP to become an employer provider, find out more [here](#).





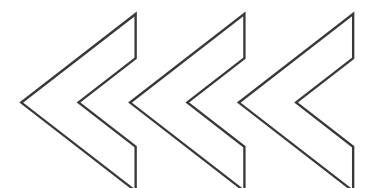
# End point assessment

As part of their apprenticeship, apprentices will have to complete end-point assessment.

The end-point assessment organisation will assess the apprentice in line with the Dental Nurse End-point Assessment Plan. This ensures that all apprentices are assessed holistically to a consistent standard at the end of their apprenticeship.

Organisations offering end-point assessment will need to be registered on the Register of End-Point Assessment Organisations (RoEPAO). As an integrated apprenticeship, the end-point assessment for Dental Nurse apprentices is integrated into the L3 qualification. This means that the end-point assessment organisation will be the organisation awarding the L3 qualification.

[!\[\]\(d66ff64371a51729ac8c1cdaa685ba6f\_img.jpg\) Click here](#) for a list of EPAOs registered for the Dental Nurse apprenticeship.



# APPLYING AND PROGRESSION ROUTES

Candidates interested in applying for the Dental Nurse apprenticeship should visit [NHS Jobs](#), [Find an Apprenticeship website](#) and the [Register of Apprenticeship Training Providers](#). It may also be worth contacting training providers directly to make enquiries about the apprenticeships they offer.

Dental Nurse apprentices will be over 16 and may earn more than the minimum apprenticeship wage. Pay is determined locally so whilst it may be higher, it cannot be lower than this amount. [Click here](#) for more information on apprentice pay.

Once qualified Dental Nurses will typically earn between £19k - £27k. With extra training Dental Nurses could take x-rays and clinical photographs, take impressions, make models of teeth and apply fluoride varnish to prevent tooth decay.

With experience Dental Nurses could train to be a dental hygienist, dental therapist or orthodontic therapists.



# Case studies and resources



Dental Trailblazer Chairs

“The dental nurse apprenticeship is very popular. Dental Nurses are the largest GDC registrant group in our workforce, 47,000 in England.”



More case studies

The HASO website has tools designed to help employers embed their apprenticeships, see resources below:

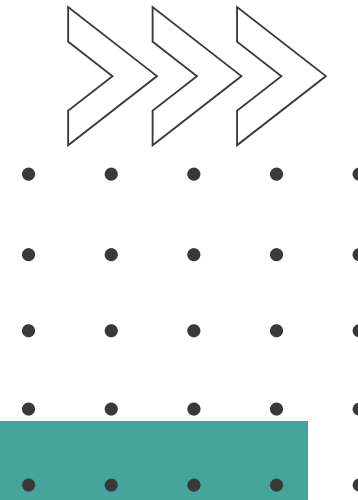
Toolkit - The toolkit is designed to support employers through the process, end to end, from setting out employers organisational strategy right through to when the apprentices are in the workplace.

Pathways tool - The pathways tool can be used to view different roles and how to move from one apprenticeship occupation to another.

Costing Calculator tool - The calculator tool can be used to work out the potential cost of delivering apprenticeships.



# ABOUT HASO



Health Education England sponsors the [Healthcare Apprenticeship Standards Online \(HASO\)](#) website. The website is hosted by Skills for Health and provides the health sector in England with a wide range of apprenticeship resources to train staff in clinical and non-clinical roles.

Apprenticeship standards are developed by employer-led Trailblazer groups in line with policy outlined by the Institute for Apprenticeships and Technical Education. Health Education England sponsors Skills for Health to facilitate a range of these employer groups. This standard was developed by a trailblazer group sponsored by Health Education England and facilitated by Skills for Health.

Skills for Health is facilitating the development of several other apprenticeship standards for use in the health sector.

