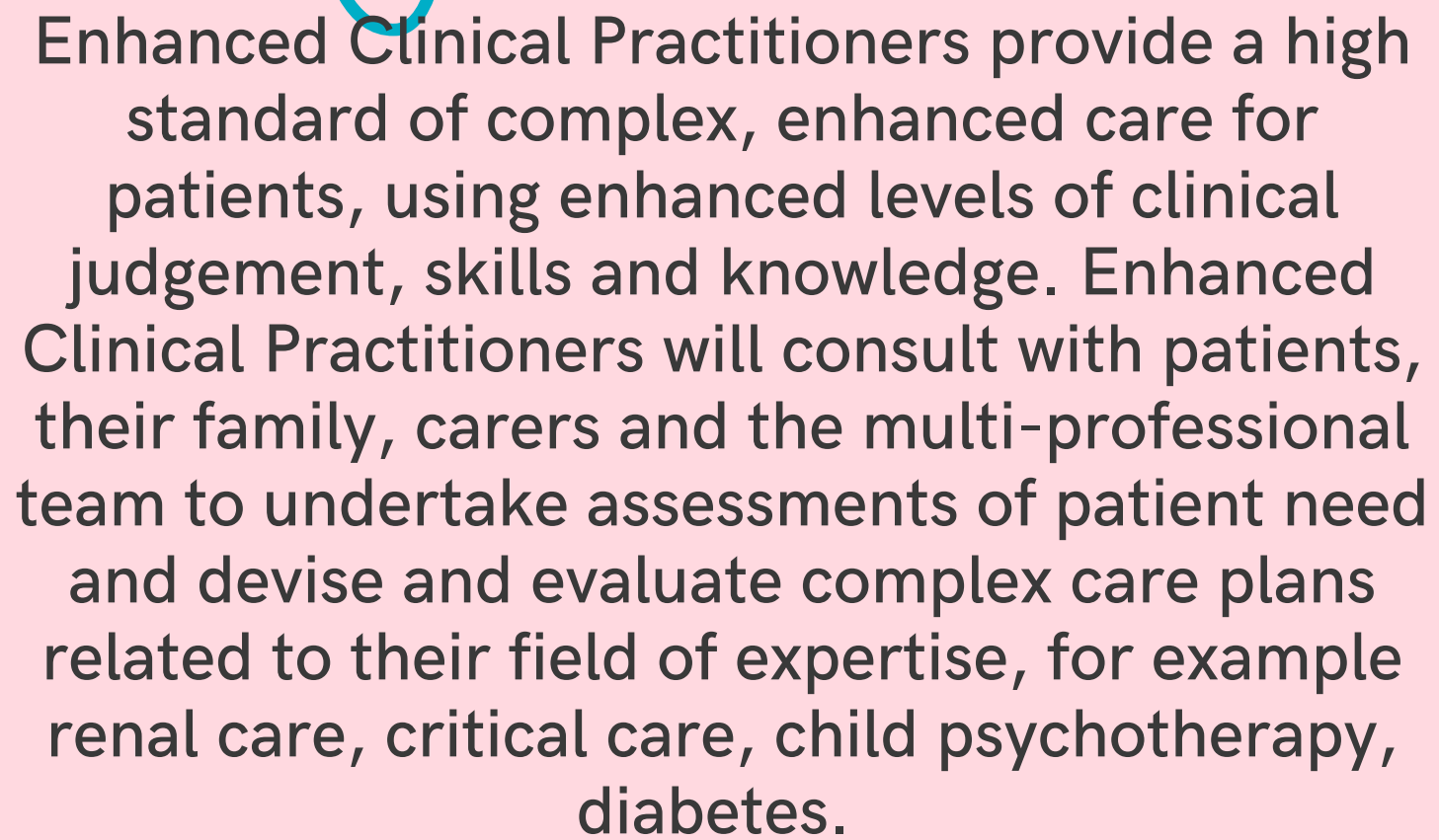


ENHANCED CLINICAL PRACTITIONER APPRENTICESHIP



**INFORMATION
PACK**

APPRENTICESHIP OVERVIEW



Enhanced Clinical Practitioners provide a high standard of complex, enhanced care for patients, using enhanced levels of clinical judgement, skills and knowledge. Enhanced Clinical Practitioners will consult with patients, their family, carers and the multi-professional team to undertake assessments of patient need and devise and evaluate complex care plans related to their field of expertise, for example renal care, critical care, child psychotherapy, diabetes.

STANDARD



EPA



LEVEL
6

DURATION
18 MONTHS

REFERENCE
ST0895

ENTRY REQUIREMENTS AND QUALIFICATIONS

Entry requirements

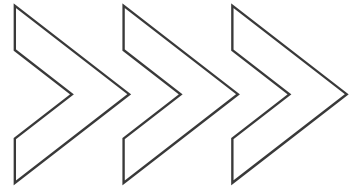
Enhanced Clinical Practitioners must be registered with either one of the statutory healthcare regulators, Social Work England or with one of the following accredited voluntary registers: The Academy for Healthcare Science, Register of Clinical Technologists or Registration Council for Clinical Physiologists. They must undertake revalidation processes or audit of their continuing professional development where these apply.

Apprentice Educational Audiologists must hold student membership with The Academy for Healthcare Science on entry, and hold full registration with The Academy for Healthcare Science at the gateway to end-point.

Qualifications

Apprentices without level 2 English and maths will need to achieve this level prior to taking the End-Point Assessment.

All apprentices must also pass the apprenticeship end-point assessment.



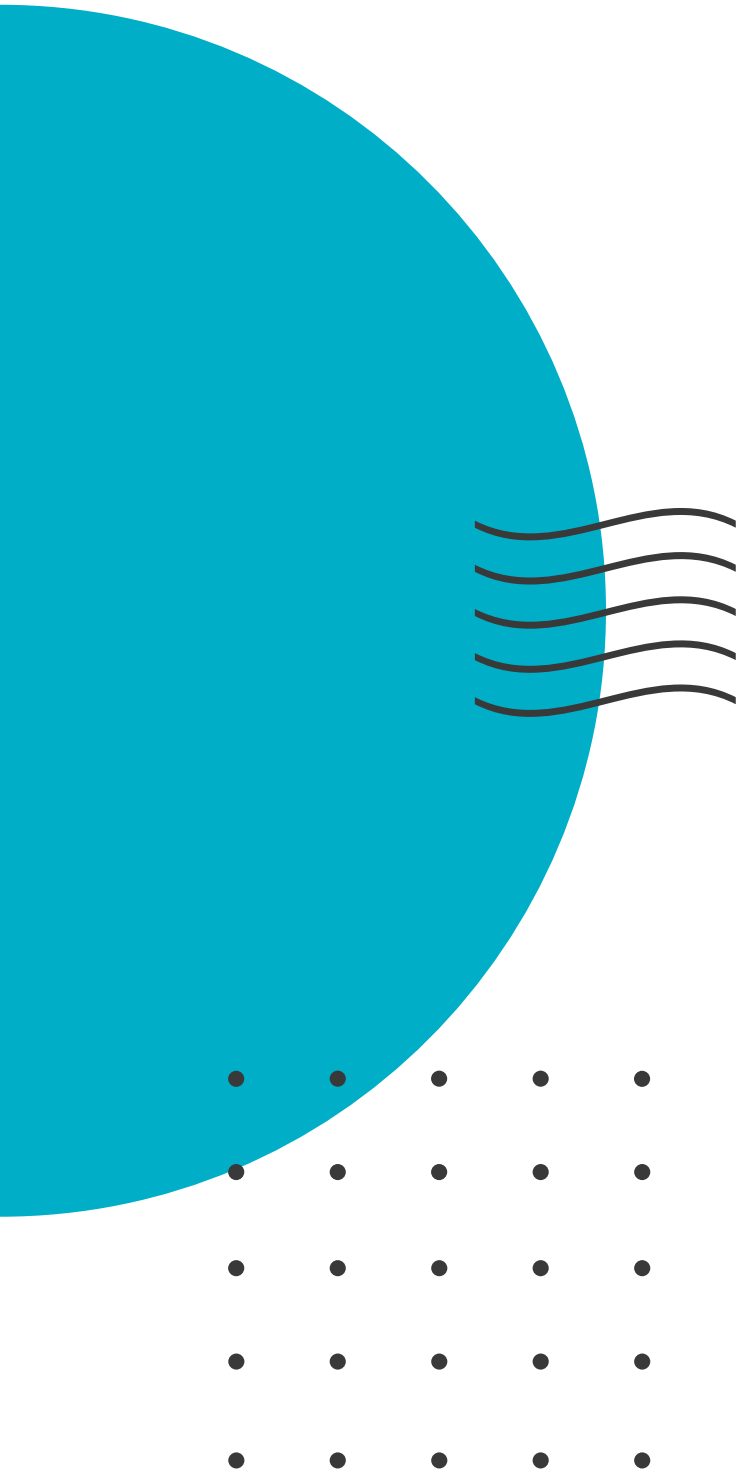
Training Provider

All providers who want to deliver apprenticeship training must be on the Register of Apprenticeship Training Providers (RoATP). Employers must choose a provider from the Register.

Providers must meet a clear set of criteria in order to be included on the Register. These include financial health, capacity/capability and quality criteria. If a provider does not meet these criteria they will not be included on the Register.

[Click here](#) for a list of registered providers for the Enhanced Clinical Practitioner apprenticeship.

Employers can also apply to the RoATP to become an employer provider, find out more [here](#).



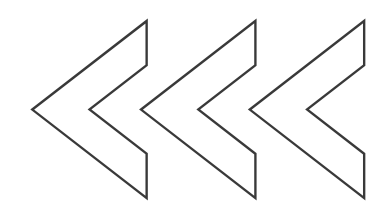
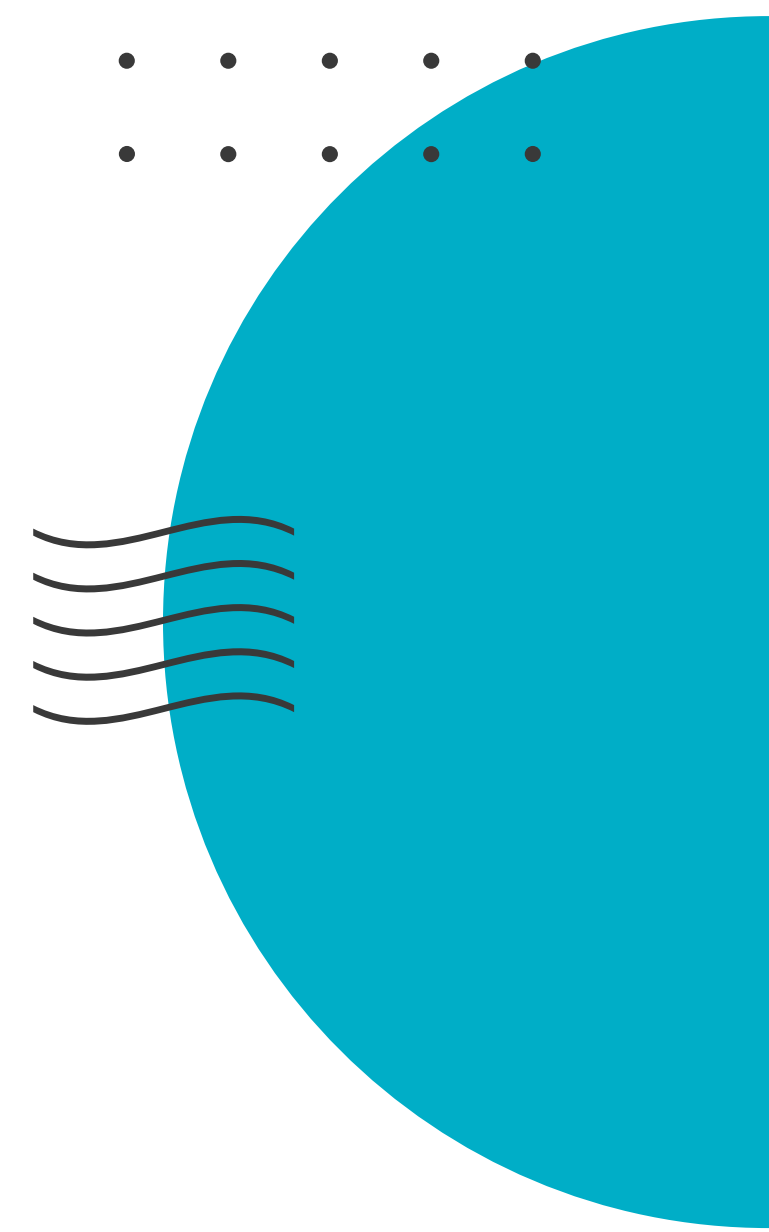
End point assessment

As part of their apprenticeship, apprentices will have to complete end-point assessment.

The end-point assessment organisation will assess the apprentice in line with the Enhanced Clinical Practitioner End-point Assessment Plan. This ensures that all apprentices are assessed holistically to a consistent standard at the end of their apprenticeship.

Organisations offering end-point assessment will need to be registered on the Register of End-Point Assessment Organisations (RoEPAO).

[Click here](#) for a list of EPAOs registered for the Enhanced Clinical Practitioner apprenticeship.



APPLYING AND PROGRESSION ROUTES

Candidates interested in applying for the Enhanced Clinical Practitioner apprenticeship should visit [NHS Jobs](#), [Find an Apprenticeship website](#) and the [Register of Apprenticeship Training Providers](#). It may also be worth contacting training providers directly to make enquiries about the apprenticeships they offer.

Enhanced Clinical Practitioner apprentices may earn more than the minimum apprenticeship wage. Pay is determined locally so whilst it may be higher, it cannot be lower than this amount. [Click here](#) for more information on apprentice pay.

Enhanced practice can be a precursor or preparation for advanced practice, equally it can be a destination career where people want to stay.



Case studies and resources



“Check out the resources for this standard:

- [FAQ document](#)
- [Employer Guide](#)
- [Health Education England's ECP page.](#)

”

+ [Case studies](#)



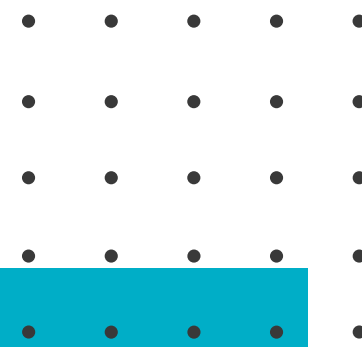
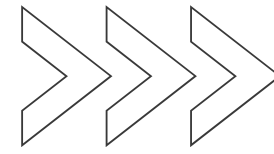
The HASO website has tools designed to help employers embed their apprenticeships, see resources below:

[Toolkit](#) - The toolkit is designed to support employers through the process, end to end, from setting out employers organisational strategy right through to when the apprentices are in the workplace.

[Pathways tool](#) - The pathways tool can be used to view different roles and how to move from one apprenticeship occupation to another.

[Costing Calculator tool](#) - The calculator tool can be used to work out the potential cost of delivering apprenticeships.

ABOUT HASO



Healthcare

Apprenticeships

Health Education England sponsors the [Healthcare Apprenticeship Standards Online \(HASO\)](#) website. The website is hosted by Skills for Health and provides the health sector in England with a wide range of apprenticeship resources to train staff in clinical and non-clinical roles.

Apprenticeship standards are developed by employer-led Trailblazer groups in line with policy outlined by the Institute for Apprenticeships and Technical Education. Health Education England sponsors Skills for Health to facilitate a range of these employer groups. This standard was developed by a trailblazer group sponsored by Health Education England and facilitated by Skills for Health.

Skills for Health is facilitating the development of several other apprenticeship standards for use in the health sector.

