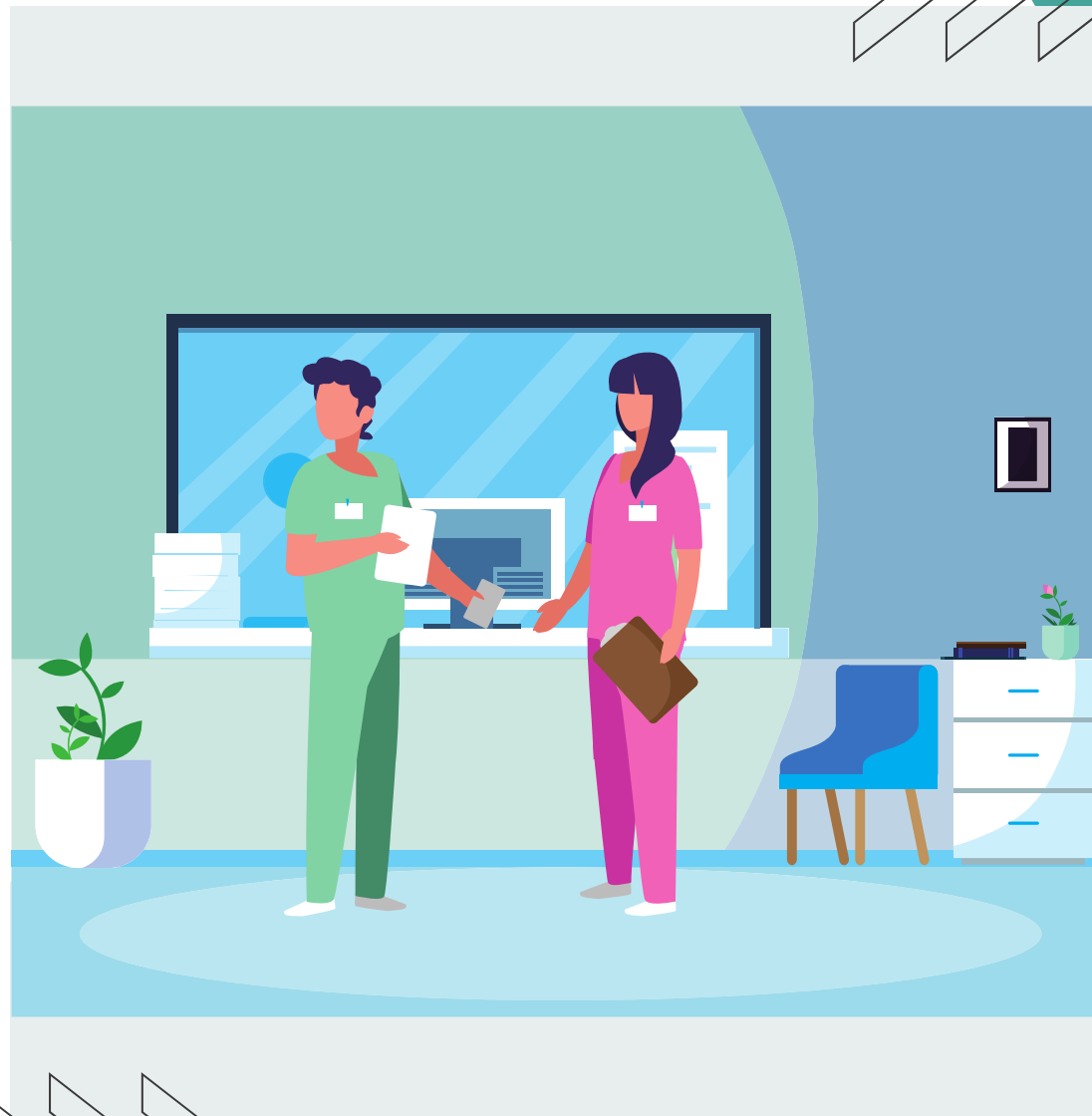


SENIOR HEALTHCARE SUPPORT WORKER APPRENTICESHIP



INFORMATION
PACK

APPRENTICESHIP OVERVIEW

Senior Healthcare Support Workers (SHCSWs) support registered healthcare professionals in the delivery of high quality and compassionate health and care services. They provide clinical, therapeutic or diagnostic care under the direct or indirect supervision of a registered healthcare professional.

They work in a range of settings for example in a hospital, as part of a community team, in a day-case unit, birthing centre, individual's homes, operating theatres, nursing or care homes, hospices and in general practice.

STANDARD



EPA

They following occupational options exist in this standard:

- (1) Adult Nursing Support
- (2) Maternity Support
- (3) Theatre Support
- (4) Mental Health Support
- (5) Children & Young People Support
- (6) Allied Health Profession Therapy Support

LEVEL
3

DURATION
24 MONTHS

REFERENCE
ST0217

ENTRY REQUIREMENTS AND QUALIFICATIONS

Entry requirements

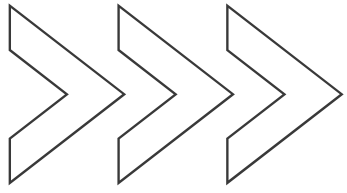
The employer, in partnership with the training provider, will determine the selection criteria for apprentices. Employers may select apprentices with prior experience as a support worker.

Apprentices without level 2 English and maths will need to achieve this level prior to taking the end-point assessment

Qualifications

Apprentices must complete a Level 3 Diploma in Healthcare Support prior to taking the end-point assessment.

All apprentices must also pass the apprenticeship end-point assessment.



Training Provider

All providers who want to deliver apprenticeship training must be on the Apprenticeship Provider and Assessment Register (APAR). Employers must choose a provider from the Register.

Providers must meet a clear set of criteria in order to be included on the Register. These include financial health, capacity/capability and quality criteria. If a provider does not meet these criteria they will not be included on the Register.

[Click here](#) for a list of registered providers for the Senior Healthcare Support Worker apprenticeship.

Employers can also apply to the APAR to become an employer provider, find out more [here](#).



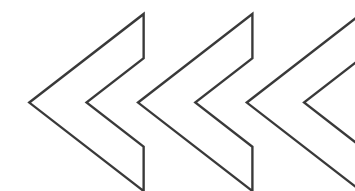
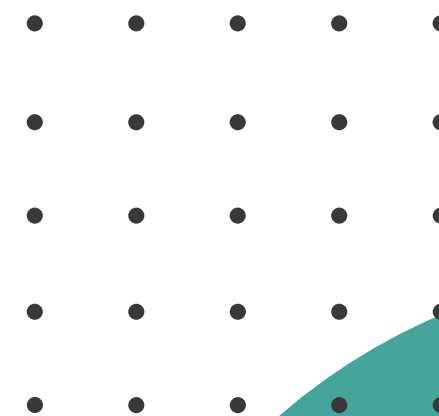
End point assessment

As part of their apprenticeship, apprentices will have to complete end point assessment.

The end-point assessment organisation will assess the apprentice in line with the Senior Healthcare Support Worker End-point Assessment Plan. This ensures that all apprentices are assessed holistically to a consistent standard at the end of their apprenticeship.

Organisations offering end-point assessment will need to be registered on the Apprenticeship Provider and Assessment Register (APAR).

[!\[\]\(74d4806277d7e73349d8e8c0897931e9_img.jpg\) Click here](#) for a list of EPAOs registered for the Senior Healthcare Support Worker apprenticeship.



APPLYING AND PROGRESSION ROUTES

Candidates interested in applying for the Senior Healthcare Support Worker apprenticeship should visit [NHS Jobs](#), [Find an Apprenticeship website](#) and the [Find apprenticeship training for your apprentice](#) website. It may also be worth contacting training providers directly to make enquiries about the apprenticeships they offer.

SHCSW apprentices will be over 16 and may earn more than the minimum apprenticeship wage. Pay is determined locally so whilst it may be higher, it cannot be lower than this amount. [Click here](#) for more information on apprentice pay.

Once qualified Senior Healthcare Support Workers will typically earn between £20k - £24k.

With the appropriate qualifications/evidence of academic ability, SHCSWs could train to become an assistant practitioner, or one of the many registered healthcare professions such as nursing associate, registered nurse, physiotherapist, podiatrist, midwife or occupational therapist.



Case studies and resources



Sandra Pierpoint - SHCSW apprentice

“Go for it! The support and people you get to work with on your journey will be amazing!”



More case studies

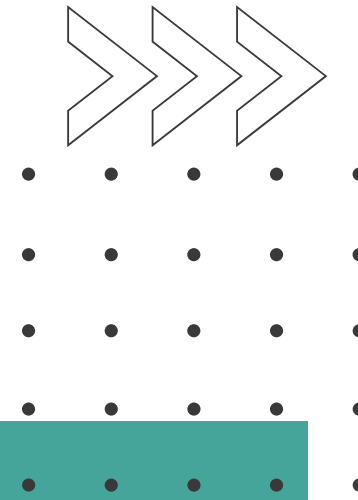
The HASO website has tools designed to help employers embed their apprenticeships, see resources below:


Toolkit - The toolkit is designed to support employers through the process, end to end, from setting out employers organisational strategy right through to when the apprentices are in the workplace.

Pathways tool - The pathways tool can be used to view different roles and how to move from one apprenticeship occupation to another.

Costing Calculator tool - The calculator tool can be used to work out the potential cost of delivering apprenticeships.

ABOUT HASO



 NHS England (formerly Health Education England) sponsors the [Healthcare Apprenticeship Standards Online \(HASO\)](#) website. The website is hosted by Skills for Health and provides the health sector in England with a wide range of apprenticeship resources to train staff in clinical and non-clinical roles.

Apprenticeship standards are developed by employer-led Trailblazer groups in line with policy outlined by the Institute for Apprenticeships and Technical Education. NHS England (formerly Health Education England) sponsors Skills for Health to facilitate a range of these employer groups. This standard was developed by a trailblazer group sponsored by NHS England (formerly Health Education England) and facilitated by Skills for Health.

Skills for Health is facilitating the development of several other apprenticeship standards for use in the health sector.

