

PARAMEDIC (DEGREE) APPRENTICESHIP

INFORMATION
PACK

APPRENTICESHIP OVERVIEW

Paramedics are registered professionals who respond to critical emergencies and traumatic situations to deliver high quality and effective pre-hospital clinical care and patient transportation in a safe and timely manner.

Paramedics may work alone or as part of a crew with other paramedics, ambulance technicians and ambulance support workers.

[STANDARD](#)



[EPA](#)



ENTRY REQUIREMENTS AND QUALIFICATIONS

Entry requirements

The employer, in partnership with the training provider, will determine the selection criteria for apprentices.

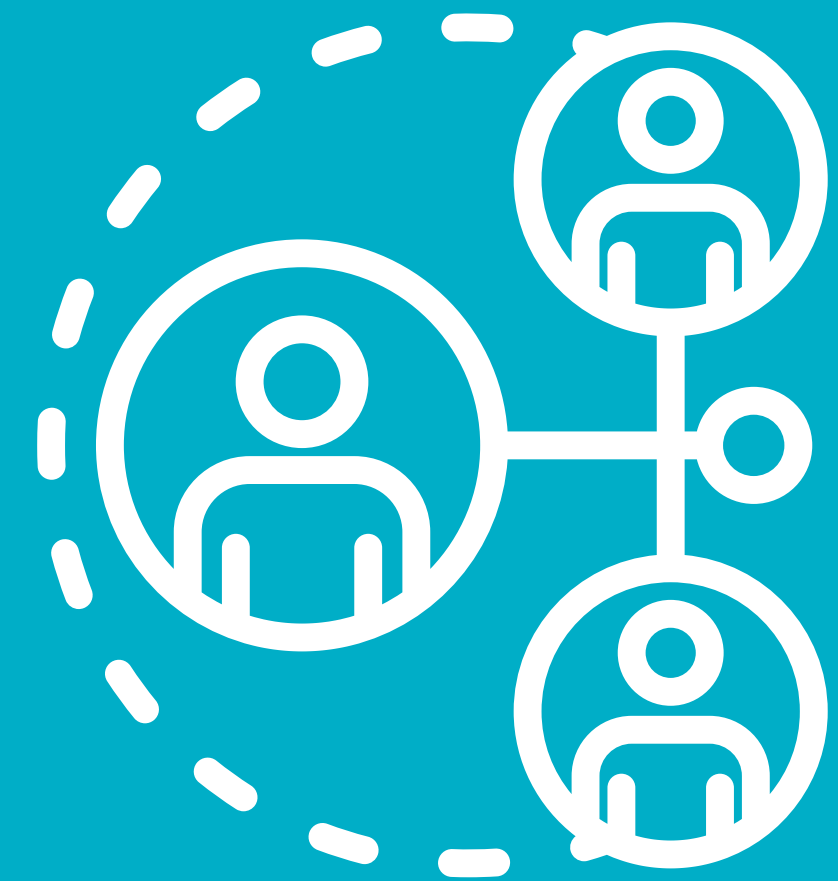
All apprentices are required to have achieved English and maths prior to starting this apprenticeship.

Qualifications

Apprentices will be required to complete a Health and Care Professions Council approved BSc (Hons) Paramedic and a Level 3 Certificate in Emergency Response Ambulance Driving Course.

All apprentices must also pass the apprenticeship end-point assessment.

REGULATOR AND PROFESSIONAL BODIES

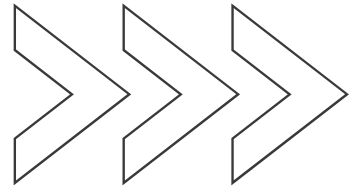


Paramedic is a profession regulated by the Health and Care Professions Council (HCPC). The HCPC sets out the standards of proficiency which every Paramedic must meet in order to become registered.

Once registered, Paramedics must continue to meet the standards of proficiency that are relevant to their scope of practice - the areas of their profession in which they have the knowledge and skills to practise safely and effectively.

On successful completion of an approved programme, apprentices are eligible to apply to the HCPC for registration as a Paramedic, which is a requirement to practice under the protected title of Paramedic.

Paramedics may become a member of a professional body like the College of Paramedics.



Training Provider

All providers who want to deliver apprenticeship training must be on the Apprenticeship Provider and Assessment Register (APAR). Employers must choose a provider from the Register.

Providers must meet a clear set of criteria in order to be included on the Register. These include financial health, capacity/capability and quality criteria. If a provider does not meet these criteria they will not be included on the Register.

[Click here](#) for a list of registered providers for the Paramedic (Degree) apprenticeship.

Employers can also apply to the APAR to become an employer provider, find out more [here](#).



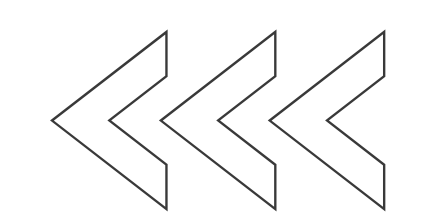
End point assessment

As part of their apprenticeship, apprentices will have to complete end-point assessment.

The end-point assessment organisation will assess the apprentice in line with the Paramedic (Degree) End-point Assessment Plan. This ensures that all apprentices are assessed holistically to a consistent standard at the end of their apprenticeship.

Organisations offering end-point assessment will need to be registered on the Apprenticeship Provider and Assessment Register (APAR). As a degree apprenticeship, the end-point assessment for Paramedic apprentices is integrated into the degree. This means that the end-point assessment organisation will be the university.

[Click here](#) for a list of EPAOs registered for the Paramedic (Degree) apprenticeship.



APPLYING AND PROGRESSION ROUTES

Candidates interested in applying for the Paramedic (Degree) apprenticeship should visit [NHS Jobs](#), [Find an Apprenticeship website](#) and the [Find apprenticeship training for your apprentice website](#). It may also be worth contacting training providers directly to make enquiries about the apprenticeships they offer.

Paramedic apprentices will be over 16 and may earn more than the minimum apprenticeship wage. Pay is determined locally so whilst it may be higher, it cannot be lower than this amount. [Click here](#) for more information on apprentice pay.

Once qualified Paramedics will typically earn between £24k - £35k. With experience and further training, a Paramedic may be able to progress to a team leader, a specialist paramedic or an emergency care practitioner.

Paramedics could also choose to move into operations management, education and training or research.



Case studies and resources



“We have been able to put ourselves as employers in the driving seat for the delivery of this apprenticeship.”

Carol Offer - Paramedic Trailblazer Chair



More case studies



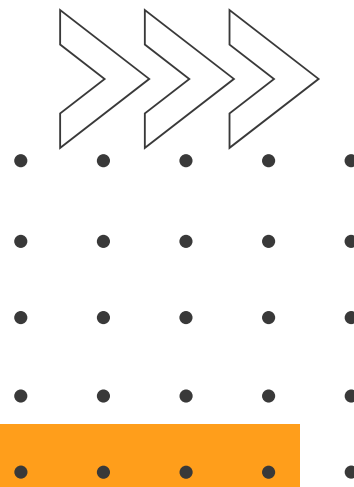
The HASO website has tools designed to help employers embed their apprenticeships, see resources below:


[Long-Term Workforce Plan Hub](#) - Designed to support employers through the process, end to end, from setting out employers organisational strategy right through to when the apprentices are in the workplace.

[Pathways tool](#) - The pathways tool can be used to view different roles and how to move from one apprenticeship occupation to another.

[Costing Calculator tool](#) - The calculator tool can be used to work out the potential cost of delivering apprenticeships.

ABOUT HASO



 NHS England (formerly Health Education England) sponsors the [Healthcare Apprenticeship Standards Online \(HASO\)](#) website. The website is hosted by Skills for Health and provides the health sector in England with a wide range of apprenticeship resources to train staff in clinical and non-clinical roles.

Apprenticeship standards are developed by employer-led Trailblazer groups in line with policy outlined by the Institute for Apprenticeships and Technical Education. NHS England (formerly Health Education England) sponsors Skills for Health to facilitate a range of these employer groups. This standard was developed by a trailblazer group sponsored by NHS England (formerly Health Education England) and facilitated by Skills for Health.

Skills for Health is facilitating the development of several other apprenticeship standards for use in the health sector.

