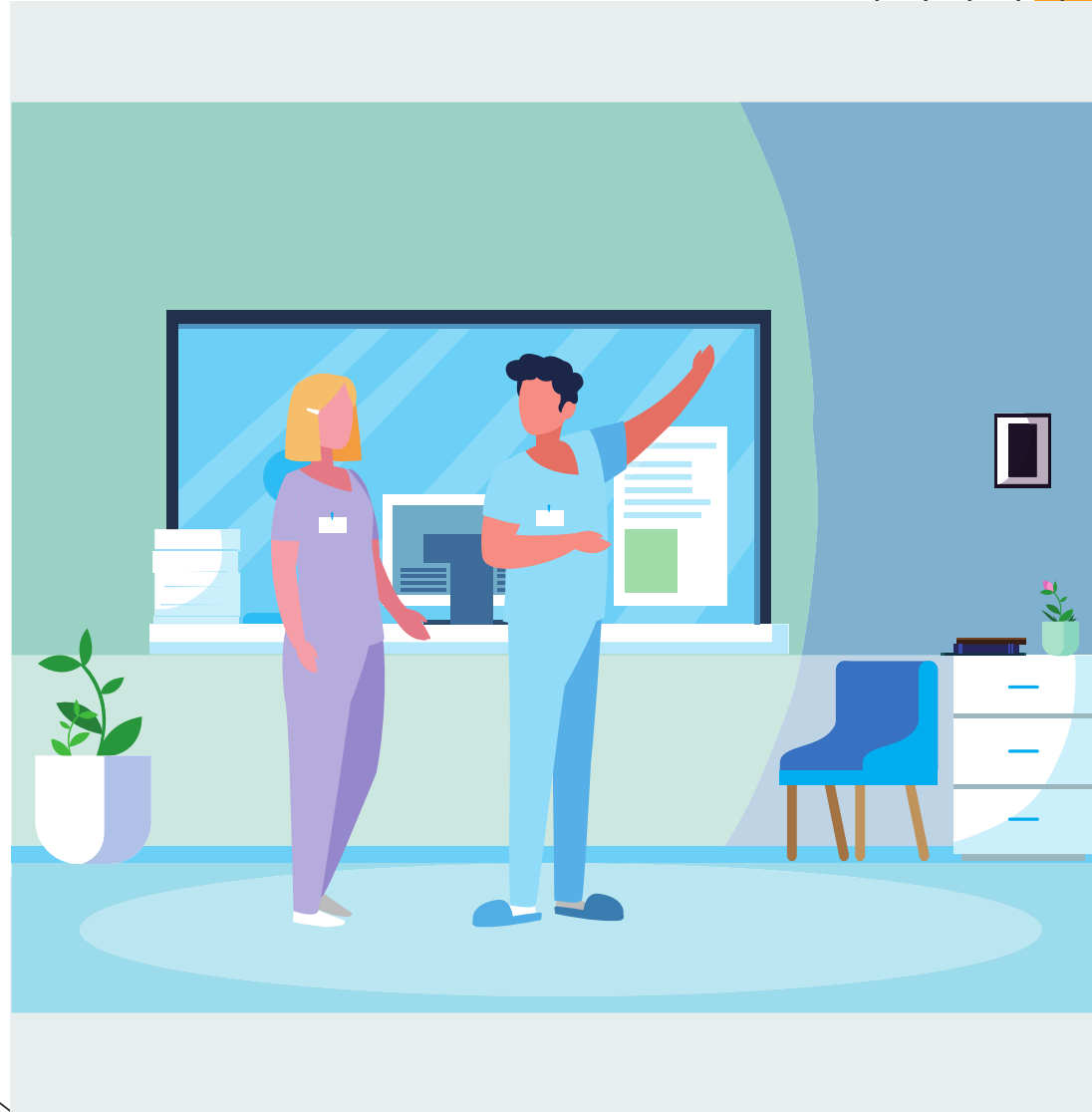


**Healthcare**

Apprenticeships

# HEALTHCARE SUPPORT WORKER APPRENTICESHIP



**INFORMATION  
PACK**

# APPRENTICESHIP OVERVIEW

Healthcare Support Workers (HCSWs) provide high quality and compassionate person-centred care and support based on individual needs and setting. Daily activities will vary according to the workplace and will be determined by the needs of the individuals they are caring for.

They will work with supervision from a healthcare professional, supporting them and helping patients on their healthcare journey.

[STANDARD](#)



[EPA](#)

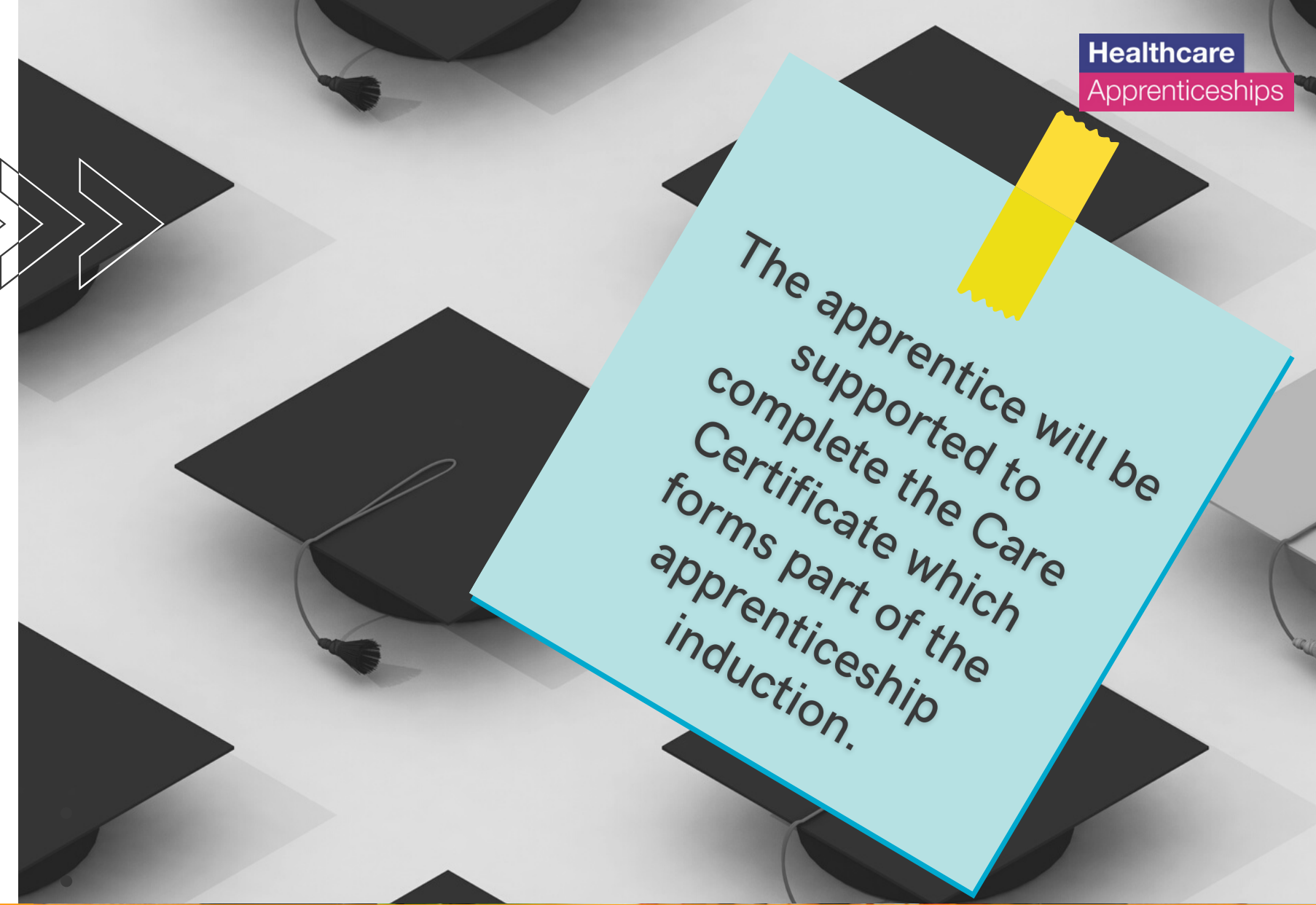


LEVEL  
2

DURATION  
12 MONTHS

REFERENCE  
ST0216

# ENTRY REQUIREMENTS AND QUALIFICATIONS



The apprentice will be supported to complete the Care Certificate which forms part of the apprenticeship induction.

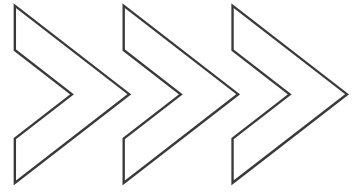
## Entry requirements

The employer, in partnership with the training provider, will determine the selection criteria for apprentices.

Apprentices without Level 1 English and Maths will need to achieve this level prior to completing their Apprenticeship.

## Qualifications

There are no mandated qualifications in this apprenticeship, however, all apprentices must pass the apprenticeship end-point assessment.



# Training Provider

All providers who want to deliver apprenticeship training must be on the Apprenticeship Provider and Assessment Register (APAR). Employers must choose a provider from the Register.

Providers must meet a clear set of criteria in order to be included on the Register. These include financial health, capacity/capability and quality criteria. If a provider does not meet these criteria they will not be included on the Register.

[Click here](#) for a list of registered providers for the Healthcare Support Worker apprenticeship.

Employers can also apply to the APAR to become an employer provider, find out more

[here.](#)



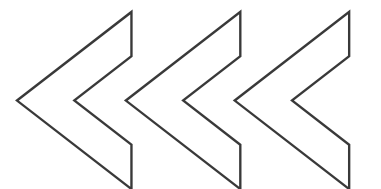
# End point assessment

As part of their apprenticeship, apprentices will have to complete end-point assessment.

The end-point assessment organisation will assess the apprentice in line with the Healthcare Support Worker End-point Assessment Plan. This ensures that all apprentices are assessed holistically to a consistent standard at the end of their apprenticeship.

Organisations offering end-point assessment will need to be registered on the Apprenticeship Provider and Assessment Register (APAR).

[Click here](#) for a list of EPAOs registered for the Healthcare Support Worker apprenticeship.



# APPLYING AND PROGRESSION ROUTES

Candidates interested in applying for the Healthcare Support Worker apprenticeship should visit [NHS Jobs](#), [Find an Apprenticeship website](#) and the [Find apprenticeship training for your apprentice](#). It may also be worth contacting training providers directly to make enquiries about the apprenticeships they offer.

HCSW apprentices will be over 16 and may earn more than the minimum apprenticeship wage. Pay is determined locally so whilst it may be higher, it cannot be lower than this amount. [Click here](#) for more information on apprentice pay.

Once qualified Healthcare Support Workers will typically earn between £18k - £24k. With experience and further training, HCSWs may be able to progress to a Senior HCSW role.

With the appropriate qualifications/evidence of academic ability, HCSWs could train to become an assistant practitioner, or one of the many registered healthcare professionals such as nursing associate, registered nurse, podiatrist, midwife or occupational therapist.

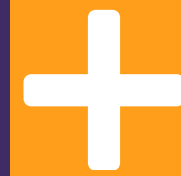


# Case studies and resources



“It was the best thing I have done applying for the apprenticeship post”

Lily Court- HCSW apprentice



More case studies

The HASO website has tools designed to help employers embed their apprenticeships, see resources below:

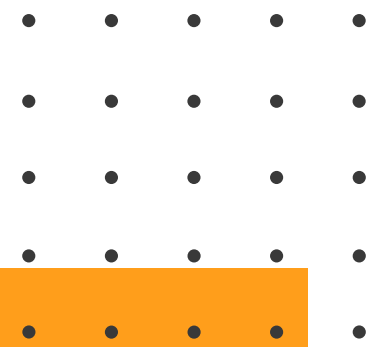
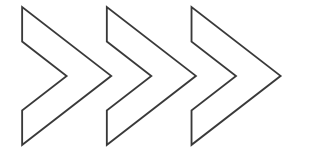
Long-Term Workforce Plan Hub - Designed to support employers through the process, end to end, from setting out employers organisational strategy right through to when the apprentices are in the workplace.

Pathways tool - The pathways tool can be used to view different roles and how to move from one apprenticeship occupation to another.

Costing Calculator tool - The calculator tool can be used to work out the potential cost of delivering apprenticeships.



# ABOUT HASO



Healthcare

Apprenticeships

[NHS England sponsors the Healthcare Apprenticeship Standards Online \(HASO\) website. The website is hosted by Skills for Health and provides the health sector in England with a wide range of apprenticeship resources to train staff in clinical and non-clinical roles.](#)

Apprenticeship standards are developed by employer-led Trailblazer groups in line with policy outlined by the Institute for Apprenticeships and Technical Education. NHS England sponsors Skills for Health to facilitate a range of these employer groups. This standard was developed by a trailblazer group sponsored by NHS England and facilitated by Skills for Health.

Skills for Health is facilitating the development of several other apprenticeship standards for use in the health sector.

