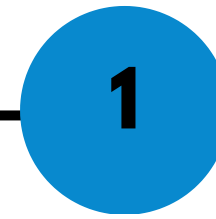
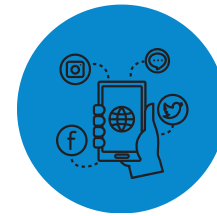


PROSTHETIC AND ORTHOTIC TECHNICIAN

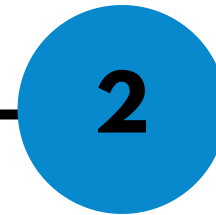
LEVEL 3 PROSTHETIC
AND ORTHOTIC
TECHNICIAN

HEALTH AND
SCIENCE ROUTE

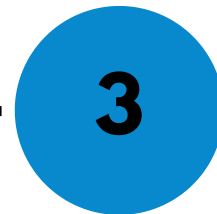
DURATION:
18 MONTHS



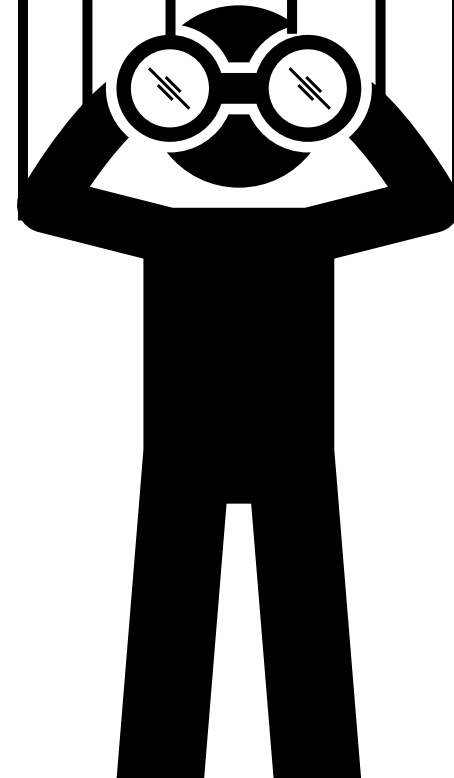
**DESIGN AND
MANUFACTURE DEVICES
THAT AID MOVEMENT**



**WORKS ON SPECIFICATIONS
RECEIVED FROM PROSTHETIST OR
ORTHOTIST**



**HAS AN UNDERSTANDING OF CLINICAL
CONDITIONS THAT THEY PROVIDE
DEVICES FOR**



TO FIND OUT MORE, DOWNLOAD THE
STANDARD AND END POINT
ASSESSMENT PLAN USING THE URL
BELOW

[HTTPS://HASO.SKILLSFORHEALTH.O
RG.UK/STANDARDS/#STANDARD-
5325](https://haso.skillsforhealth.org.uk/standards/#standard-5325)